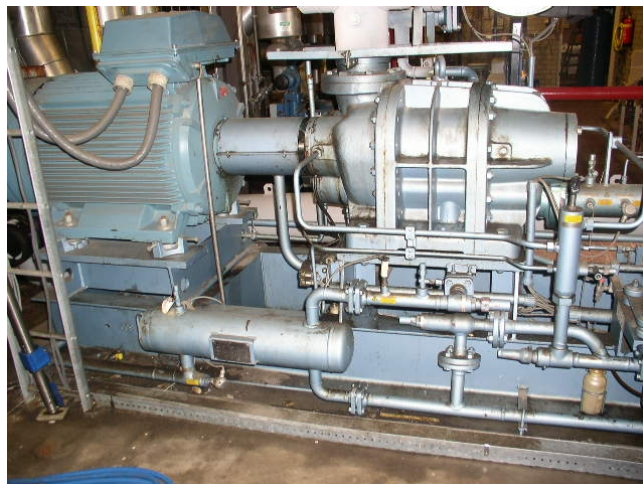


Grasso S3

Specifications

Brand	Grasso
Type	S3
Refrigerant	NH 3 (ammonia)
kW at -30°C/+40°C	285*
kW at -40°C/+40°C	285*
Electromotor Specs	200 kW at 2960 RPM
Unloaded Start	✓
Capacity Control	✓
On steel base frame	✓
Pressure safety switches	✓
Hp/Lp/Op	
Pressure gauges	✓
Hp/Lp/Op	
Liquid receiver	✓
Oil separator	✓
Sight Glass	✓
Control panel	✓
Remarks	*Capacity based on -37C/+35C
Sizes	3500x1600x2180 mm (LxWxH)
Project	Diepop
Stock	1



Description

Used Grasso S3

